



# Case Study

YESCO Production Facility  
Salt Lake City, Utah

natural<sup>®</sup>led

**LIGHT RENDERING**

The lighting upgrade in the production area included LED Linear High Bays with built-in Z10 receptacles for controls, that were both color and wattage selectable.

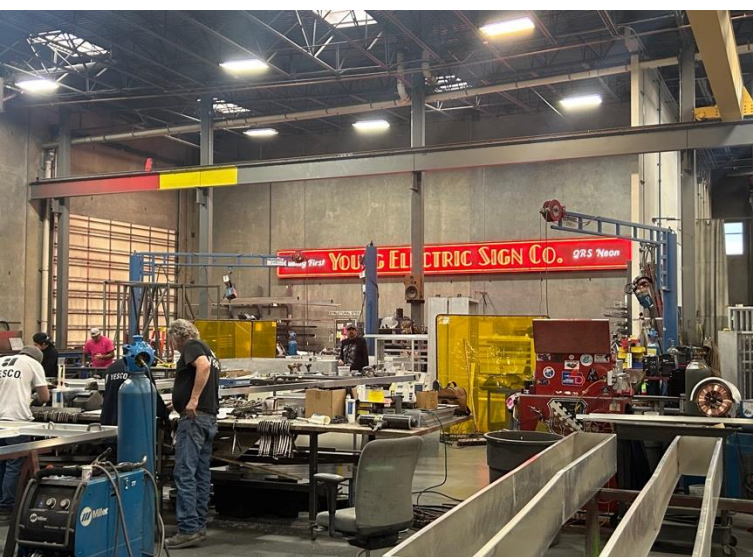


Linear High Bay with Z10 (HBL)

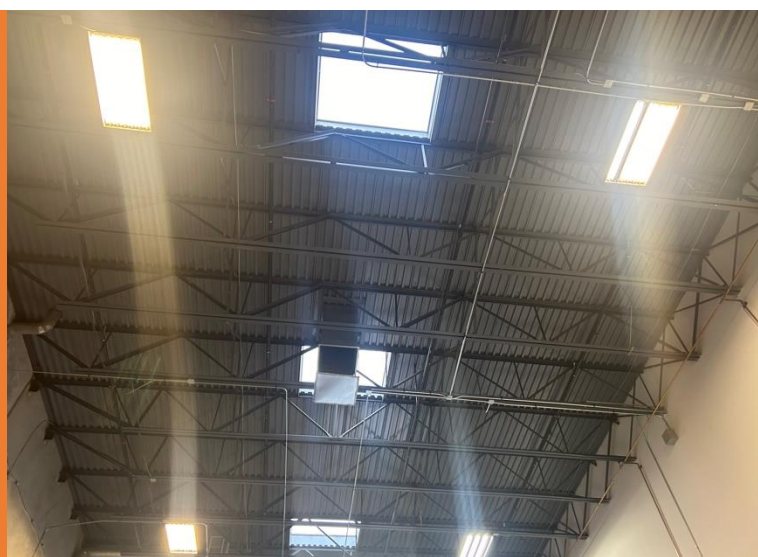


**PRODUCTION AFTER**

The YESCO Production Warehouse is where the sign making comes to life. Welding, using heavy equipment, saws, and grinders is difficult and dangerous work. Therefore, improving the lighting by replacing outdated fluorescent T5 tubes with LED linear high bays made a huge impact throughout.



**B  
E  
F  
O  
R  
E**



**R  
E  
S  
U  
L  
T  
S**

**OLD** - Linear Fluorescent T5HO  
Wattage: 351  
Quantity: 81

**NEW** - LED Linear High Bay  
Wattage: 300      Wattage: 150  
Quantity: 78      Quantity: 3

**ANNUAL SAVINGS CALCULATIONS**  
Energy: Operating Hours 2,600  
Savings: \$1,549 annually

**IMPROVED**



**SAFETY**

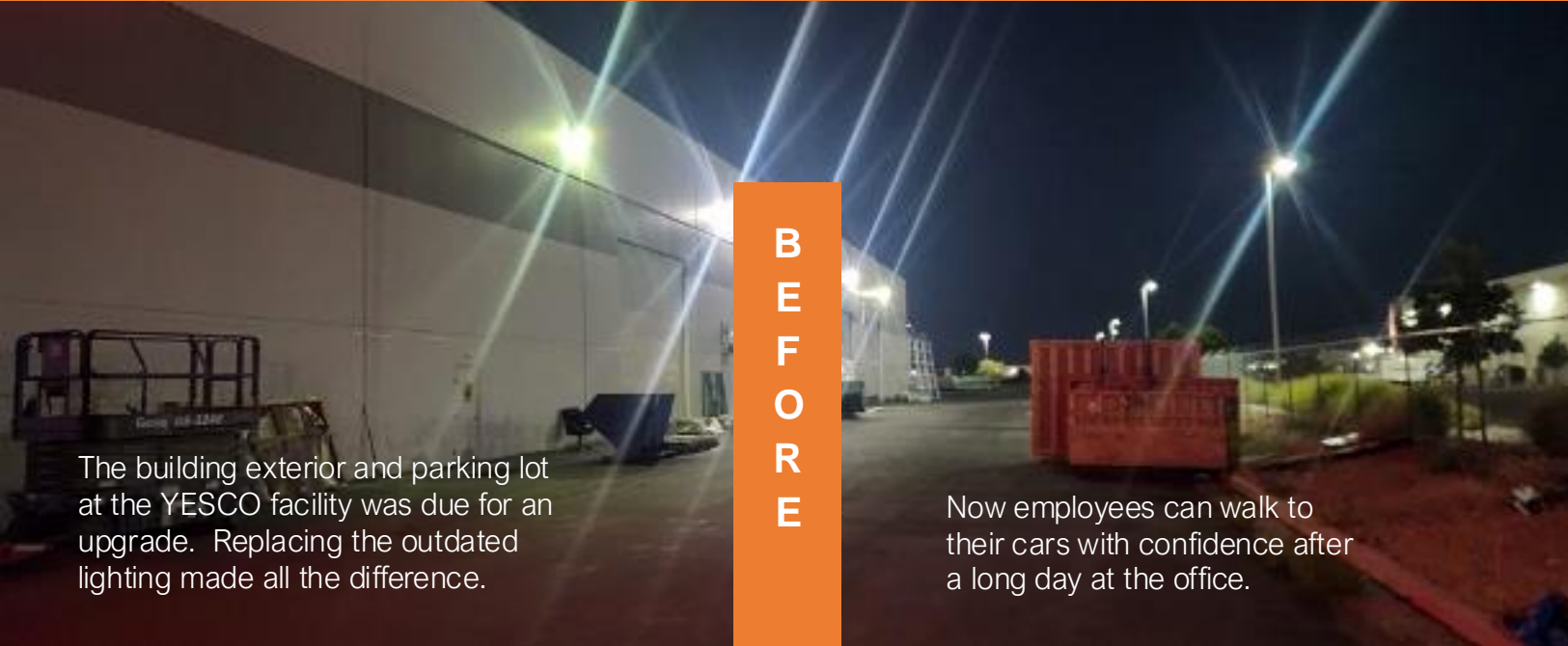
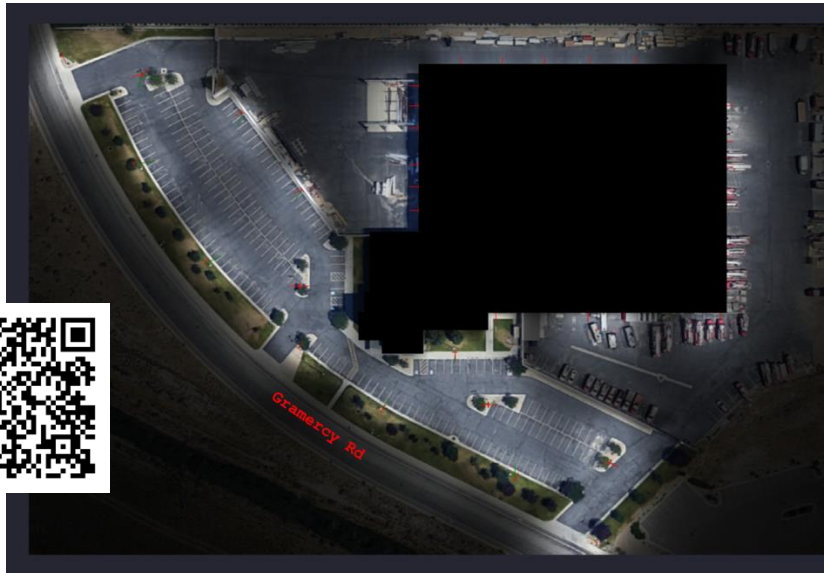
“They were super easy to install. It’s clean, you can see what you’re doing, so I think quality, productivity and safety will improve.” Zach Henderson, Service Production Manager, YESCO.

**LIGHT RENDERING**



**EXTERIOR AFTER**

The parking lot and building exterior upgrade included swapping metal halide fixtures for LED Slim Area Lights and field selectable Traditional Wall Packs.



**B  
E  
F  
O  
R  
E**

The building exterior and parking lot at the YESCO facility was due for an upgrade. Replacing the outdated lighting made all the difference.

Now employees can walk to their cars with confidence after a long day at the office.

**IMPROVED**



**SAFETY**

**OLD** – Metal Halide Area Lights  
Wattage: 456    Quantity: 18  
Pulse Start Metal Halide Wall Packs  
Wattage: 410    Quantity: 20

**NEW** – LED Slim Area Lights  
Wattage: 240    Quantity: 18  
LED Traditional Wall Packs  
Wattage: 100    Quantity: 21

**R  
E  
S  
U  
L  
T  
S**

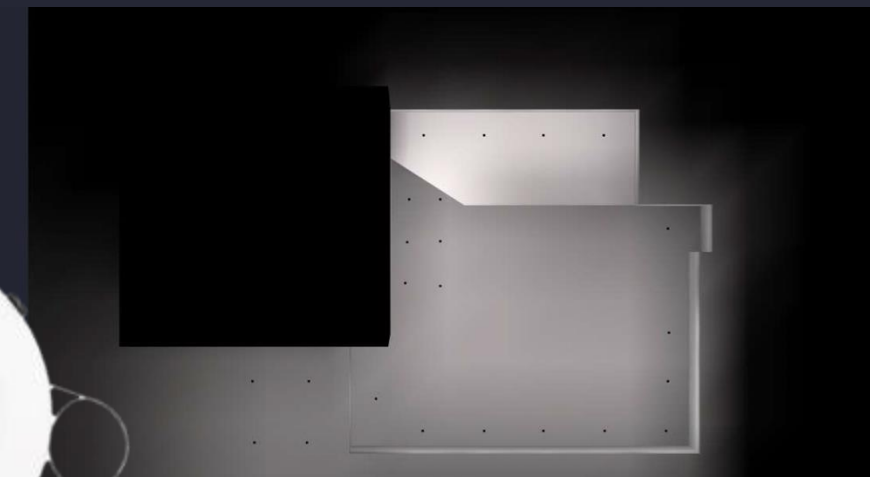
**ANNUAL SAVINGS CALCULATIONS**  
Energy: Operating Hours 3,276  
Savings: \$3,743 annually

“Do you want your facility to look like ours? We’ve got the means and the people to do it. We have partners like naturaLED in place. This is what we and we do it really well,”  
David Jones, Director of Marketing, YESCO.

The upgrade in the lobby area included replacing ceramic metal halide fixtures with energy saving LED Commercial Downlights that provide an even distribution of light.



Commercial Downlight (CRL)



Scan for an exclusive case study video.



*"Everybody has been super complimentary of how smoothly the process was. Working with the naturaLED team has been wonderful for all of us at YESCO,"*

Crissy Long, YESCO Region Service Sales Manager, Greater Salt Lake City

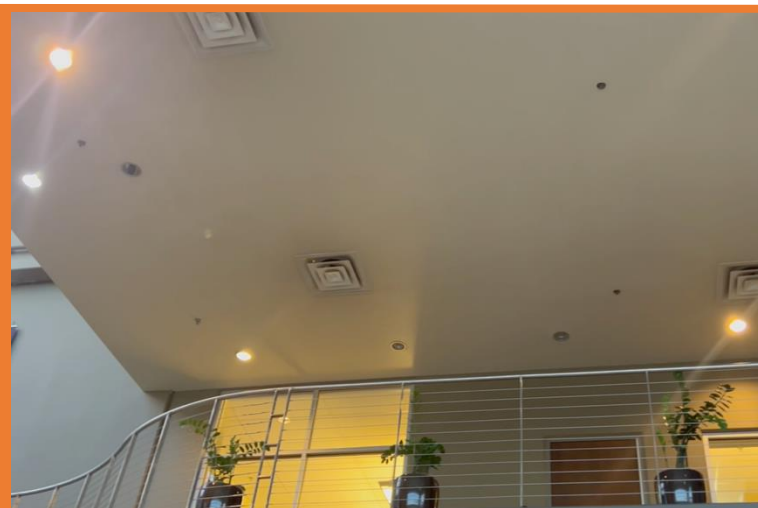


**LOBBY AFTER**

The lobby in the YESCO Salt Lake City Production Center welcomes guests with floor to ceiling windows. Now that the outdated and discolored metal halide fixtures have been replaced with new LED downlights, this area has truly become a showpiece for the facility.



**B  
E  
F  
O  
R  
E**



**OLD** – Ceramic Metal Halide Downlights  
Wattage: 189  
Quantity: 15

**NEW** - LED Recessed Downlights  
Wattage: 27  
Quantity: 15

**R  
E  
S  
U  
L  
T  
S**

**ANNUAL SAVINGS CALCULATIONS**  
Energy: Operating Hours 2,600  
Savings: \$821 annually  
Total Savings: \$6,113 annually





naturaled®

California, USA

2000 S. Grove Ave, Bldg B, Ontario, CA 91761  
855-758-7009 | 909-930-6868

Texas, USA

1940 Diplomat Drive, Farmers Branch, TX 75234

North Carolina, USA

2511 Reliance Ave, Apex, NC 27539

Canada

Unit 206 – 9710 187<sup>th</sup> Street Surrey, BC V4N 3N6

naturaled.com | info@naturaled.com